

OHO PREFAB

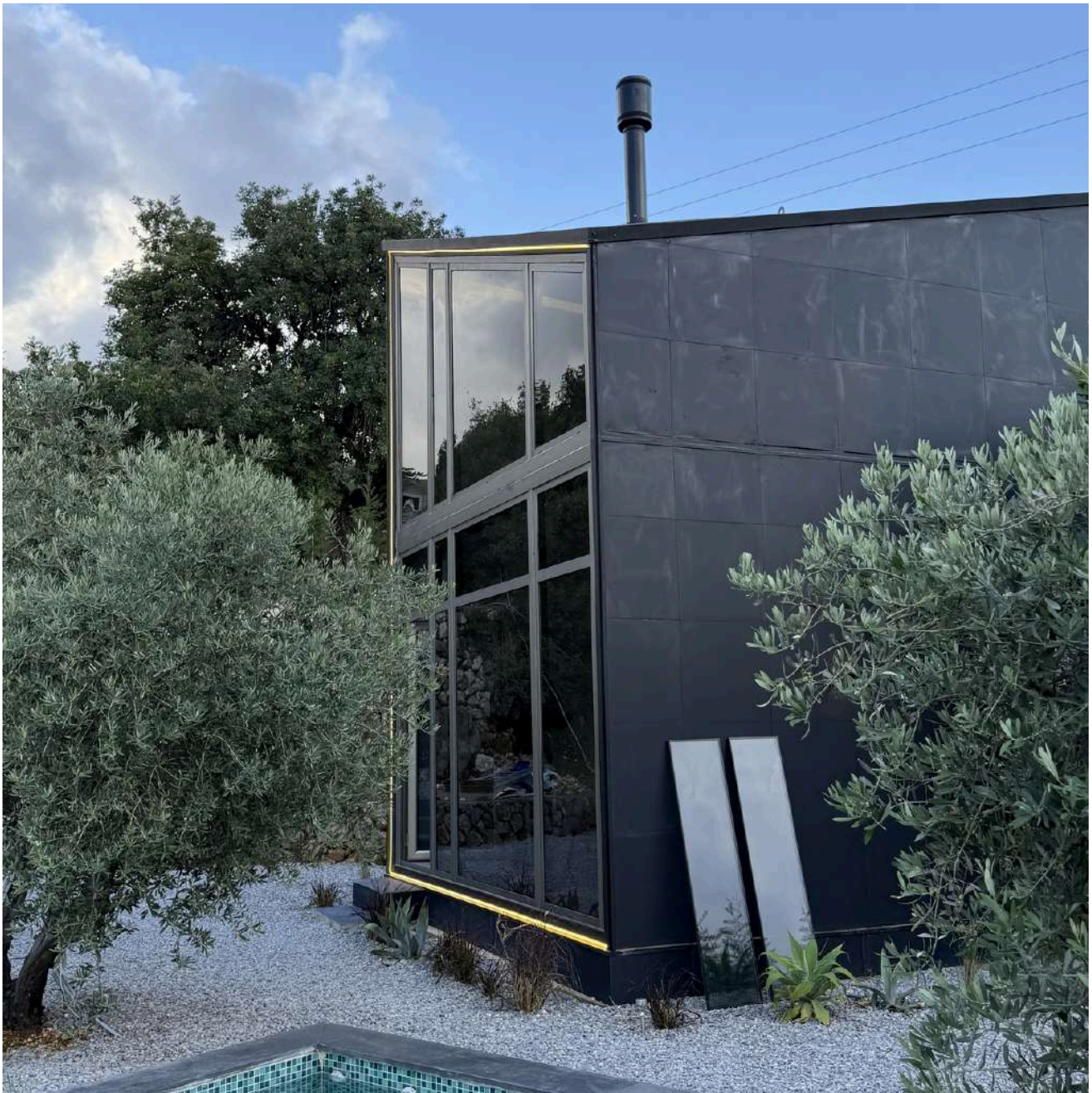
THE LOFT



www.ohoprefab.com

Our Design Philosophy

A contemporary prefab home designed by our team to combine comfort, functionality, and modern architectural elegance. Featuring double-height glazing, clean lines, and warm interior ambiance, this model offers a refined living experience surrounded by nature.



Distribution

LAYOUT DISTRIBUTION

Ground Floor

- Open-plan living area designed for flexible furniture arrangement
- Compact kitchen with functional workflow zoning
- Fully equipped bathroom with space-efficient fittings

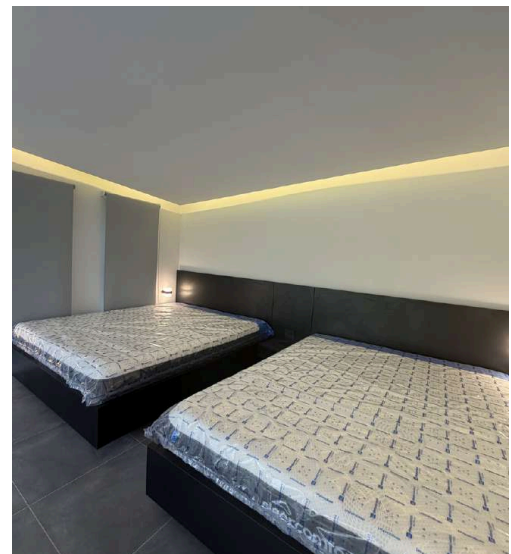
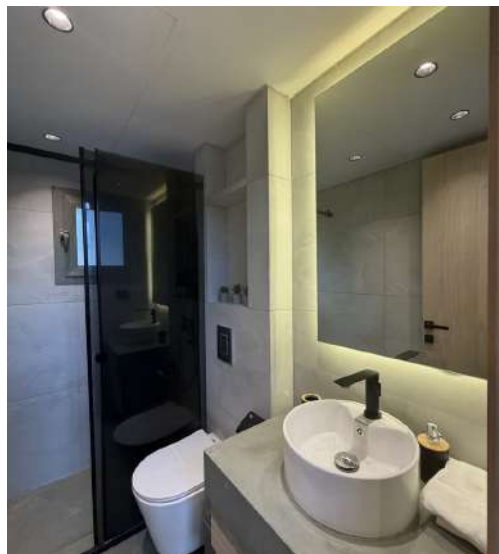
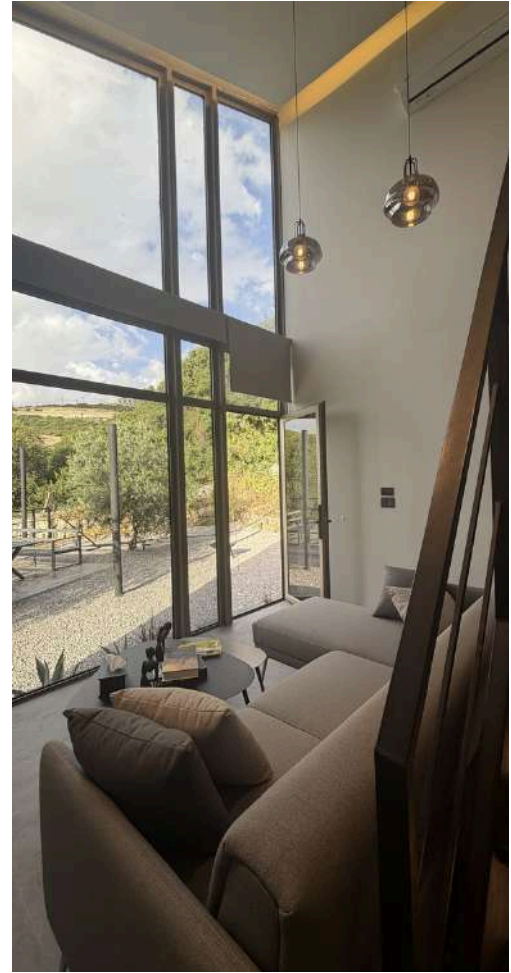
First Floor

- One bedroom
- Natural ventilation and daylight integration
- Efficient circulation core with staircase access



CONSTRUCTION & MATERIALS

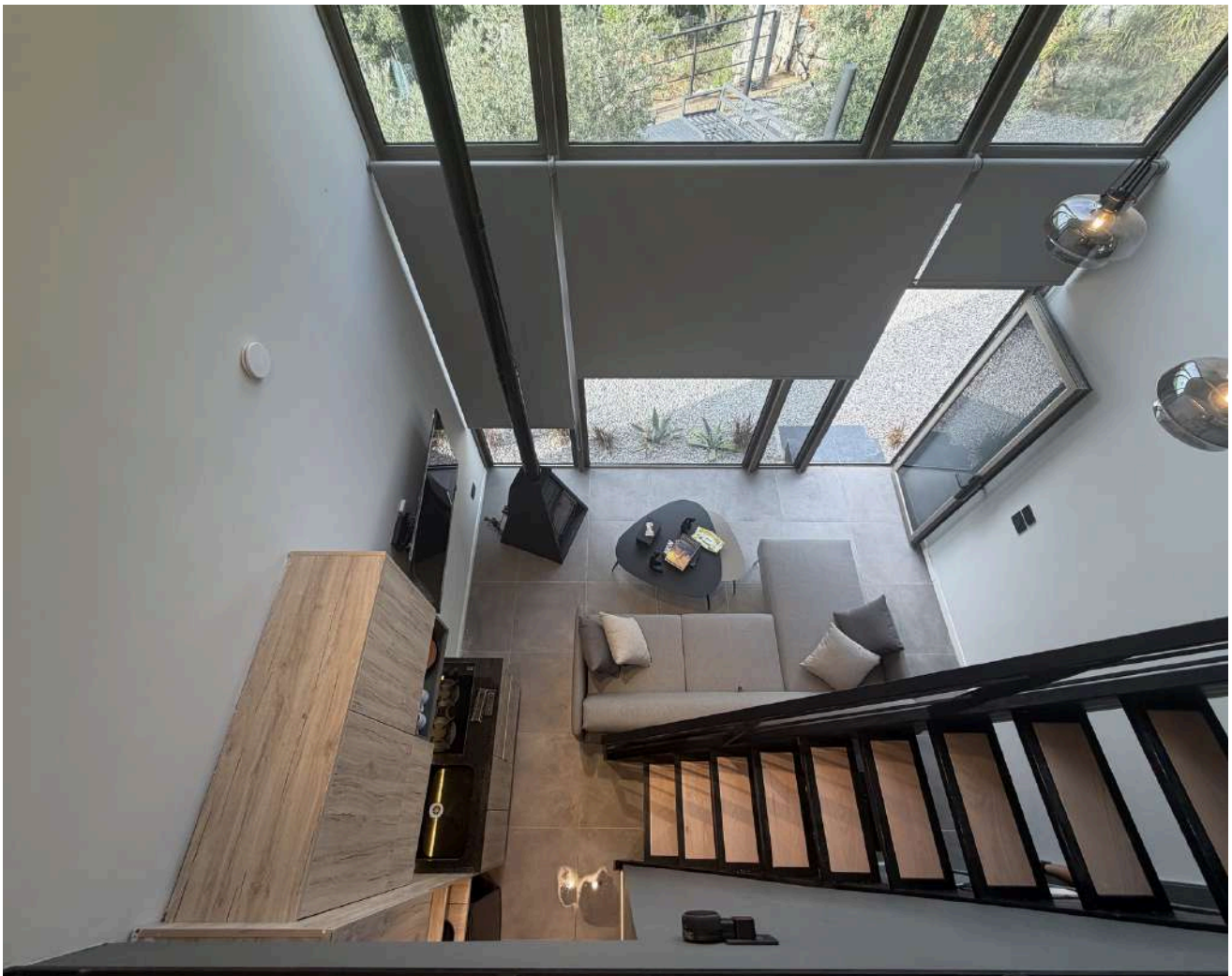
- Prefabricated modular structural system
- Galvanized steel frame for enhanced durability
- Insulated wall panels for thermal and acoustic performance
- Moisture-resistant interior finishes
- Energy-efficient window systems



Design Intent



- Maximum spatial efficiency within minimal footprint
- Clean architectural lines with modern minimalist expression
- Flexible interior adaptability for furnishing customization
- Optimized cost-to-performance ratio for investment viability



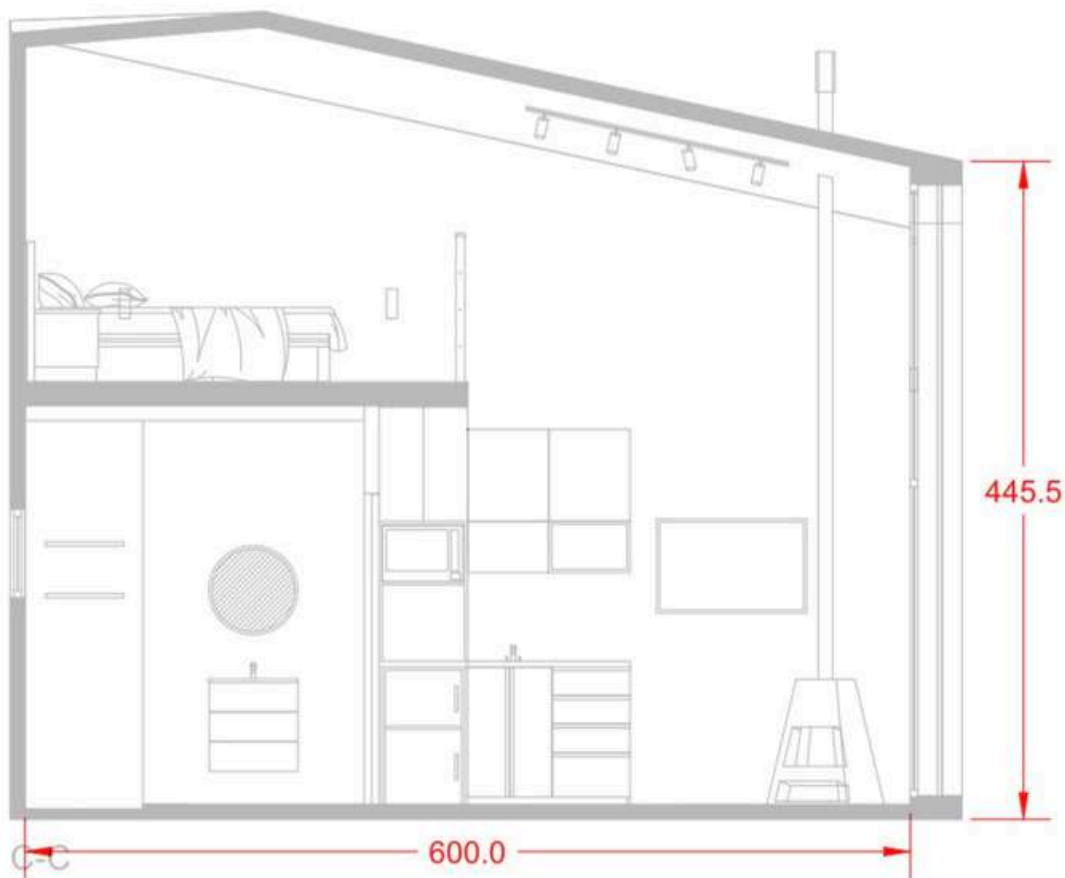
2D Layout

Ground Floor

- Entrance with direct access to open-plan living space
- Spacious living room with flexible layout configuration
- Defined kitchen area with efficient workflow zoning
- Bathroom with compact modern layout
- Staircase leading to upper level
- Double-height void space above part of the living area for enhanced volume and natural light

First Floor

- 1 Bedroom only (private master bedroom)
- Overlooking the void / living area (visual connection)
- Natural lighting and ventilation openings
- Minimal circulation for maximum usable area

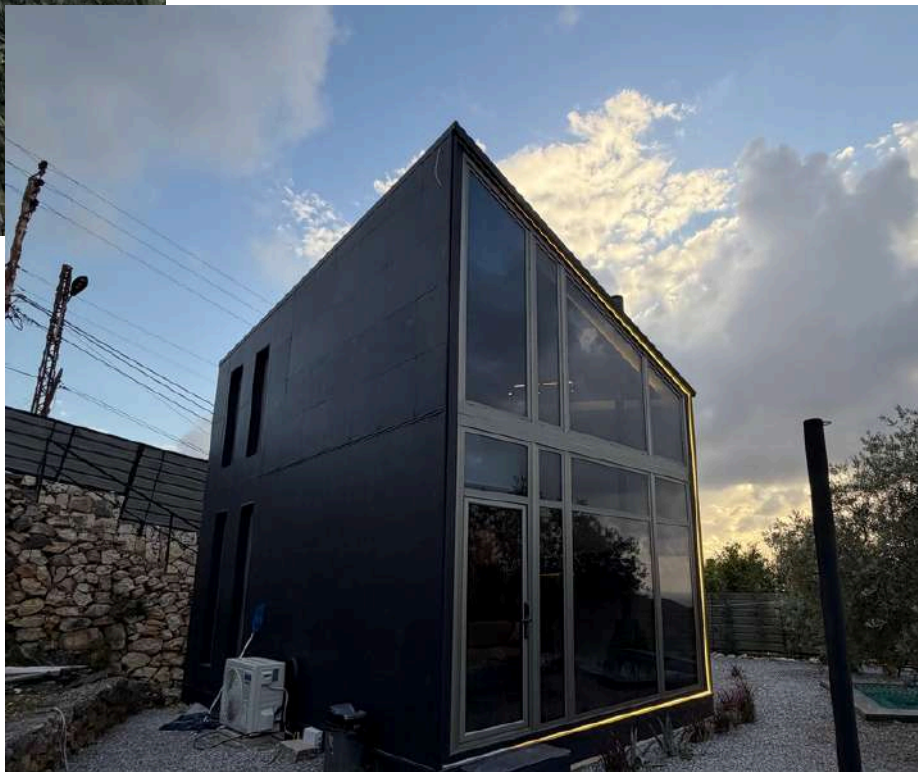


PRICING OPTIONS & INCLUSIONS

Basic Finishes

USD 26,000 to 28,000

- Structural steel frame system
- External façade without decorative cladding finishes
- Internal partitions and staircase structure
- Standard commercial-grade flooring finishes
- Basic electrical installation with standard lighting fixtures
- Basic plumbing installation
- Commercial-grade bathroom accessories and sanitary fixtures
- Commercial-grade kitchen accessories and basic sink installation
- Standard doors and windows
- Standard paint finishes
- Functional ready-to-use delivery
- No furniture included
- No premium decorative finishes included



Premium Finishes

USD 31,000

- Upgraded interior and exterior finishes
- Premium flooring (porcelain / upgraded tiles)
- Painted or decorative wall finishes
- Complete bathroom set (sanitary ware included)
- Kitchen with countertop + basic cabinetry
- Electrical finishing with switches, sockets, and lighting points
- Improved doors and window systems
- Enhanced interior detailing
- No furniture included



Fully Furnished Package

USD 36,000

- Premium finishes package included
- Full interior design execution
- Living room furnished with sofa and center table
- Two bedrooms, each including:
 - Bed frame
 - Mattress
- Fully equipped kitchen including:
 - Kitchen cabinets
 - Countertop
 - Sink and fittings
 - Mini bar fridge
 - Microwave
 - Stove
- Fully fitted bathroom with accessories
- Lighting fixtures included
- Ready-to-move-in





OUR CONTACT

Office: Chekka, North Lebanon
Website: www.ohoprefab.com
Phone: 961 81 276 285
Phone: 961 79 130 573